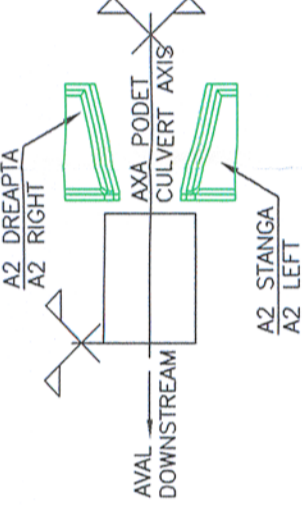


CARACTERISTICILE BETONULUI

- C 35/45, expunere XC4+XF3+XA1 (R0), CI 0.2, agregate D_{max} 22, densitate D 2.5, consistența S3
- C 35/45, expunere XC4+XF3+XA1 (R0), CI 0.2, agregate D_{max} 22, densitate D 2.5, consistența S3

FIGURA 1
FIGURE 1

BETON C35/45 OTEL PC60 ACOPERIRE 4cm
CONCRETE C35/45 PC60 STEEL COVERING 4cm

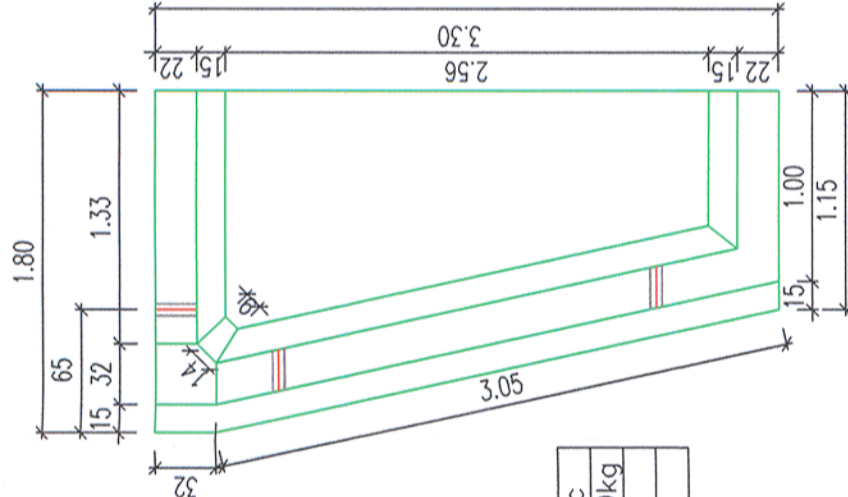


Prezentul plan anuleaza si inlocuieste versiunea anterioara
This plan cancels and replaces previous version

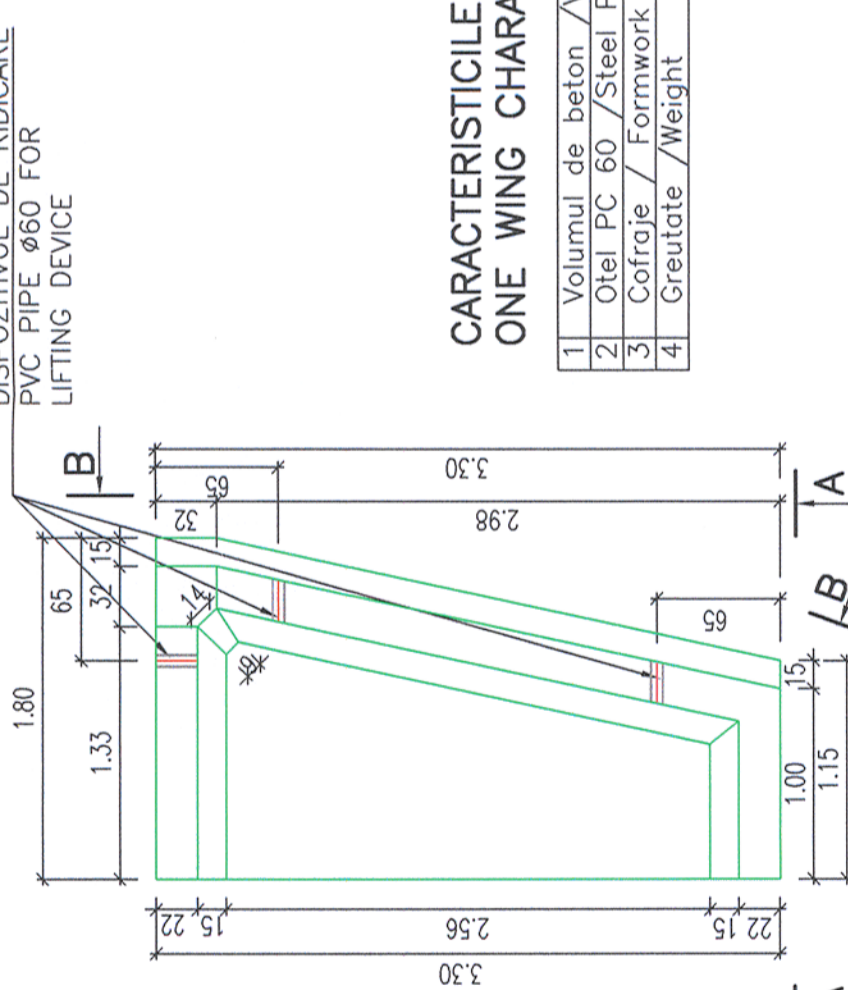


CONVOI DE CALCUL LM71
CALCULATION CONVOY LM71

PLAN ARIPA A2 DREAPTA
RIGHT WING A2 PLAN

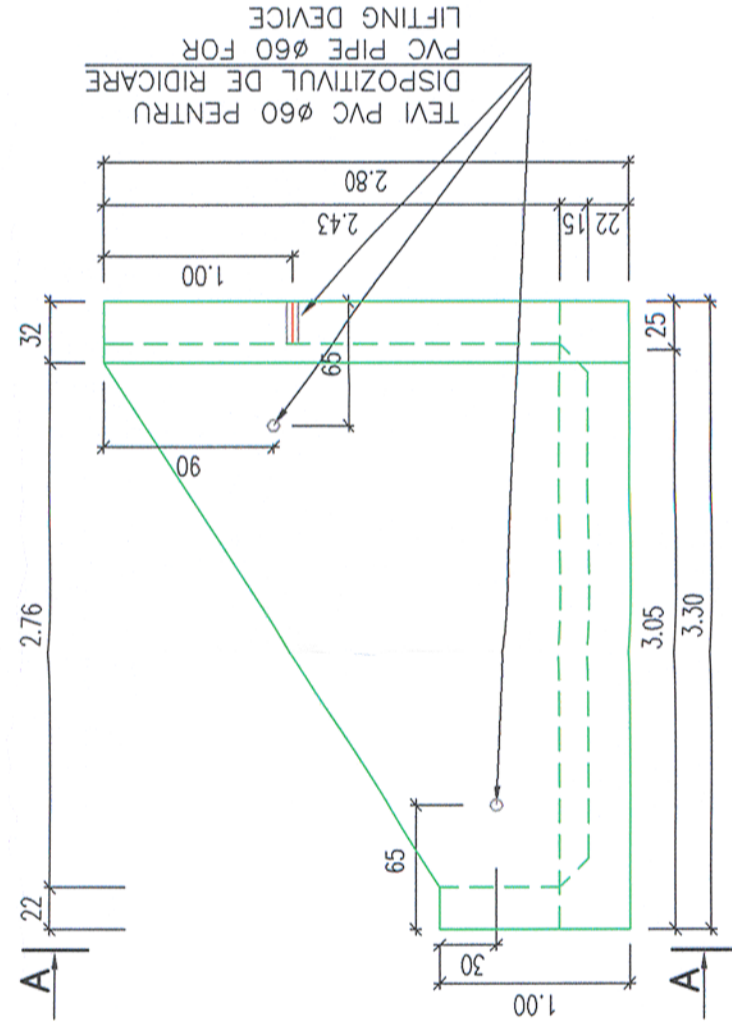


PLAN ARIPA A2 STANGA
LEFT WING A2 PLAN

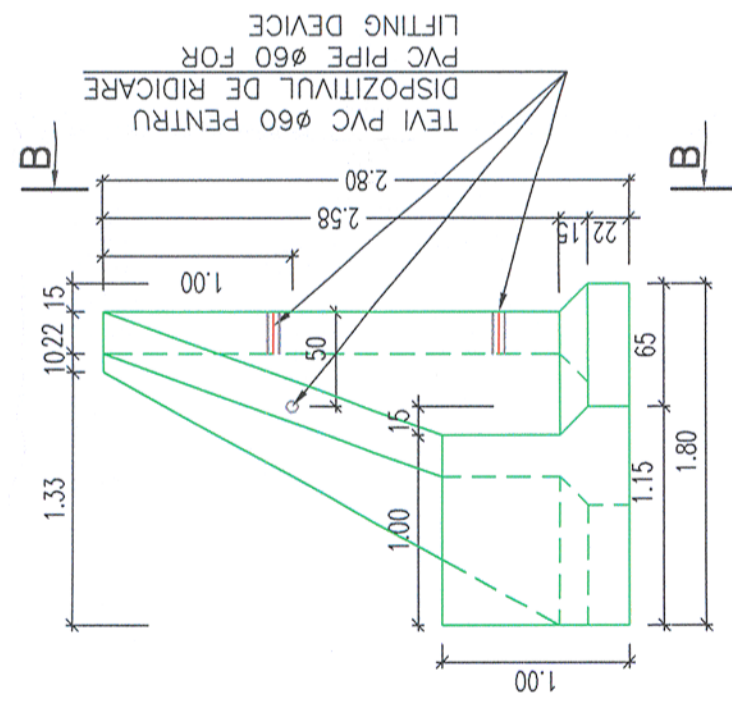


PLAN COFRAJ FORMWORK PLAN Sc 1:50

VEDERE B-B
B-B VIEW



VEDERE A-A
A-A VIEW



CARACTERISTICILE UNEI ARIPI ONE WING CHARACTERISTICS

1	Volumul de beton / concrete	3.32mc
2	Otel PC 60 / Steel PC60	285.00kg
3	Cofraje / Formwork	26.40
4	Greutate / Weight	8.30t

- ATENTIUNE !
-Prezentul plan contine planul de cofraj pentru aripa A2 stanga;
-Pentru perechea ei din dreapta se vor pastra aceleasi dimensiuni, cofrajul fiind orientat invers (vazut in oglinda);
-A se vedea in schita din fig. 1.
- NOTA:
1 -Aripa prefabricata se va confectiona din beton clasa C35/45 si otel PC60;
2 -Dupa decofrare, fetele interioare ale peretilor si fata superioara a placii de baza se vopsesc cu suspensie de bitum filerizat in dublu strat;
3 -Pentru manevrarea prefabricatului se vor lasa orificii amplasate conform planului. Dupa montarea definitiva in amplasament a tronsoanelor, se vor umple cu mortar.
4 -Aripile prefabricate se vor amplasa pe blocurile de fundatie monolitice prin intermediul unui strat de mortar de ciment care va fi alcatuit din:
-un strat de nivelare de 2cm
-un strat de 1 cm de fixare pe blocul monolit
Inaintea aplicarii mortarului, suprafata blocului se va curata bine de toate impuritatile;
5 -La executie se vor respecta cu strictete prevederile din prescriptia tehnica NE 013-99 "Cod de practica pentru executarea elementelor prefabricate din beton, beton armat si beton precomprimat" si din Caietul de Sarcini.
6 -Compactarea pamantului de umplutura din interiorul arilor se va face cu placa vibratoare.
- ATTENTION !
-This drawing represents the formwork plan for the left A2 wing;
-For the right A2 wing, there will be maintained the same dimensions but the formwork will be placed in mirror;
-To be seen the figure no. 1.
- NOTE:
1 -The prefabricated wing will be executed of concrete class C35/45 and PC 60 steel;
2 -After removing the formwork, the interior sides of the walls and the upper side of the bottom plate are painted with filler bitumen suspension in double layers;
3 -To operate the prefabricated element will be provided holes located acc. to plan. After the definitive mounting of the section in location, the holes will be filled with mortar.
4 -The prefabricated wings will be placed on the monolith foundation blocks by a cement mortar layer composed by:
-a levelling layer of 2 cm. thickness
-a layer of 1 cm. to fix on the monolith block.
Before mortar laying, the foundation block surface will be well cleaned by all the impurities.
5 -During work construction there will be strictly applied the provisions of the technical prescription NE 013-99 "Practice code for the concrete precast elements, reinforced and prestressed concrete" and Technical Specifications of this project.
6 -Compaction of filling earth from inside the wings is done with vibrating plate.

NOTA / NOTE

Acest plan este valabil pentru zone seismice cu acceleratie orizontala de varf $ag \leq 0,16g$.
This plan applies to seismic zones with top horizontal acceleration $ag \leq 0,16g$.

Verificator / Expert Checker / Expert	Cerinta Requirement	Semnatura Signature	Referat / Expertiza Report / Expertise
European Investment Bank	MINISTERUL TRANSPORTURILOR	COMPANIA NATIONALA DE CAI FERATE "CFR" SA	
PROIECTANT / DESIGNER:			
Aprobat / Approved	Sef de echipa / Team leader	C. Teodorescu	Data / Date
Verificat / Checked	Expert Cheie / Key Expert	R. Tudorascu	01.2013
Subcontractant / Subcontractor			
Aprobat / Approved	Adjunct Sef de echipa / Deputy Team leader	A.M. Baicu	01.2013
Protectat / Designed	Inginer / Engineer	F. Ioanidi	01.2013
"Reabilitarea liniei c.f. Frontiera - Curtici - Simeria, parte componenta a coridorului IV Pan - European pentru circulatia trenurilor cu viteza maxima de 160 km/h"			
"Rehabilitation of the Railway Line Border - Curtici - Simeria, component Part of the IV Pan - European Corridor for the Trains Circulation with maximum speed of 160 km/h"			
Section 2 : km 614 - Gurasada			
Denumire desen / Drawing name:			
PLAN COFRAJ ARIPIA TIP A2EN SHUTTERING PLAN WING A2EN TYPE			
Scara / Scale	Revizia / Revision	Cod desen / Drawing Code	Nr / No
1:20	1/05.2013	PT.02.02.00.PO.014	14



Project 9i
35311.1
Faza / Phase:
PTH+CS / TD+TS

Sennatura
Signature

Data
Date

Semnatura
Signature